

## Key Investor Information

This document provides you with key investor information about this fund. It is not marketing material. The information is required by law to help you understand the nature and the risks of investing in this fund. You are advised to read it so you can make an informed decision about whether to invest.

ISIN:  
IE00B27ZR556  
WKN:  
A0M16Y

# AMADEUS CAPITAL VISION PLC - AMADEUS ASIAN REAL ESTATE SECURITIES FUND Share Class E (EUR)

Managed by Allianz Global Investors Ireland Limited, part of Allianz Global Investors

### Objectives and Investment Policy

The fund aims to generate capital growth in the long term with dividend yield as a secondary objective.

We invest at least 85% of the fund's assets in equity securities of issuers participating in or deriving a significant portion of their revenues and/or profits from the real estate sector in Asian countries (including Australia and New Zealand), whereas at least 50% have to be invested in equity securities of companies incorporated in developed countries.

Benchmark of the fund is FTSE EPRA/NAREIT Asia Pacific. We have discretion to deviate from the benchmark.

You may redeem shares of the fund usually on each business day.

We usually distribute the income of the fund on a yearly basis.

Recommendation: the Share Class of the Fund should be held for a long-term investment horizon.

### Risk and Reward Profile



This risk and reward indicator is based on past performance data. It may not be a reliable indication of the future risk profile of the fund.

The categorisation of the fund is not guaranteed and may change in the future.

Even the lowest category 1 does not mean a risk-free investment.

### Why is the fund in this category?

Funds of category 6 have shown in the past a high volatility. The volatility describes how much the value of the fund went up and down in the past. The units of a fund of category 6 might be subject to high price fluctuations based on the historical volatilities observed.

## Charges

These charges are used to pay the costs of running the fund, including the costs of marketing and selling. They reduce the potential growth of your investment.

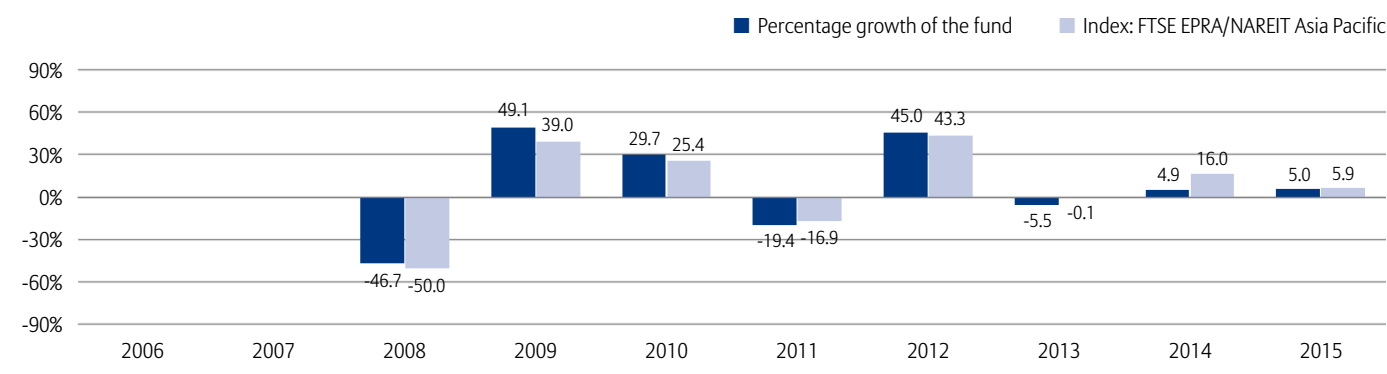
One-off charges deducted before or after you invest	
Entry Charge	5.00%
Exit Charge	0.00%
This is the maximum charge that might be taken out of your money before it is invested or before the proceeds of your investments are paid out.	
Charges taken from the fund over a year	
Ongoing Charges	2.00%
Charges deducted from the fund under certain specific conditions	
Performance Fee	25.00% a year of any returns the fund achieves above the benchmark, the FTSE EPRA/NAREIT Asia Index Total Return (gross).

The entry and exit charges shown are maximum figures. In some cases you might pay less – you can find actual entry and exit charges from your financial adviser.

The ongoing charges figure shown here is an estimate of the charges. It does not include transaction costs incurred when we buy or sell assets for the fund or performance fee.

You will find more details about the calculation of the charges including the performance fee by checking the respective part of the prospectus.

## Past Performance



Past performance is not a reliable guide to future performance.

The past performance shown here takes account of all charges and costs with the exception of the entry and exit charge.

The fund was launched in 2005.

The performance of the fund is calculated in EUR.

## Practical Information

Depository: State Street Custodial Services (Ireland) Limited

You may obtain free of charge the prospectus, the latest annual and semi-annual reports in English and German from Allianz Global Investors Ireland Limited, 2nd Floor Block E, Iveagh Court, Harcourt Road, Dublin 2, Ireland or at [www.allianzgi-regulatory.eu](http://www.allianzgi-regulatory.eu).

The unit prices as well as further information on the fund (including other shareclasses of the fund) are available online at [www.allianzgi-regulatory.eu](http://www.allianzgi-regulatory.eu).

The fund is subject to tax laws and regulations in Ireland. This might have an impact on your personal tax position. For further details, please speak to your tax advisor.

Allianz Global Investors Ireland Limited may be held liable solely

on the basis of any statement contained in this document that is misleading, inaccurate or inconsistent with the relevant parts of the prospectus for the fund.

The fund is a sub-fund of AMADEUS CAPITAL VISION PLC (the "umbrella fund"). You may switch into shares of another sub-fund of the umbrella fund. The entry charge applies for the switch. The assets of each sub-fund are segregated from other sub-funds of the umbrella fund. The prospectus and the reports refer to all sub-funds of the umbrella fund.

This fund is authorised in Ireland and regulated by Central Bank of Ireland. Allianz Global Investors Ireland Limited is authorised in Ireland and regulated by Central Bank of Ireland.

The key investor information is accurate as at 17.02.2016.